





## PEKA CHEMIE INDUSTRIAL CO.

---

Our Company was established in March 1996 in a bid to produce various types of industrial coatings. Having accomplished the study and design phases for the production of electrostatic powder coatings in 1996 and 1997 and the procurement and installation of plant machinery and equipment in 1998, Peka Chemie Industrial Co. successfully achieved production in 1999, the Company started mass producing the coatings in mid-2000.

Owing to its deriving benefit from versatile production plants together with the state-of-the-art technologies, our Company is now one of the leading manufacturers of these items in the region.

---



## SAND TEXTURE POWDER COATING

---

These coatings have a rough surface similar to sandpaper. The degree of surface roughness can be controlled by monitoring the coat thickness. In order to achieve a rougher surface, the color coat should be thinner than usual and must be cured completely. The level of gloss and roughness can be adjusted based on preference and the application requirements.

These coatings are available in all coating bases like polyester, epoxy polyester, polyurethane, etc. In fact, PU-based sand texture powder coatings can be used to great advantage in aluminum door and window sector of industry as they have a wood-like decorative effect.

The ratio of virgin-to- recycled coating affects the roughness or smoothness of these coatings, therefore it is recommended to keep the ratio constant to ensure a uniform design.

---



WRINKLE POWDER COATING

## WRINKLE POWDER COATING

---

These coatings are characterized by alternating depressions and elevations, either with a wide amplitude of low height or a very compact pattern of minute depressions and elevations. The surface must be sprayed cautiously, to prevent cavitation in the final product. These coatings could be used on surfaces exposed to sunlight, chemicals or corrosive agents.

---

## ANTIQUE POWDER COATING

---

These coatings have an uneven, rough surface. This kind of coating can be used on uneven surfaces, like those with welding dents on them.

The thickness of these coatings is higher than usual, so they are not suitable where high mechanical resistance is required. Antique powder coatings usually have a decorative purpose, we may apply a coat of Zinc plus a suitable lacquer on the top to increase their resistance.

Peka Chemie specializes in manufacturing antique powder coating for indoor and outdoor purposes with a range of colors and effects

---



## CROCODILE SKIN POWDER COATING

This coating resembles a crocodile skin pattern once cured. This coating has two distinct variations:

1. PU-based crocodile skin coating with high resistance to harsh atmospheric conditions with bold embossed patterns suitable for outdoor applications such as roofings.
2. Epoxy-based crocodile skin coating which has high thermal resistance and is suitable for kitchenware, utensils and heaters.







## MULTICOLOR POWDER COATING

---

This type of coating is characterized by a background color and various colors scattered on the background. Both coatings could be produced in different shades. These coatings are best suited for teflon-coated utensils or toys. It is worth mentioning that to achieve the uniform effect, it is recommended to keep the virgin-to-recycled powder ratio constant to ensure a uniform design.

---

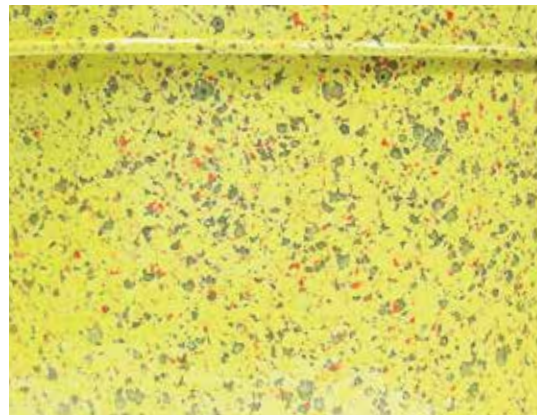


## MULTICOLOR POWDER COATING

---

This type of coating is characterized by a background color and patches in various colors scattered in the main background. Both coatings could be produced in different shades. These coatings are best suited to applications like teflon-coated utensils or toys. It is worth mentioning that to achieve the uniform effect, it is recommended to maintain the virgin-to-recycled-powder ratio as constant as possible, as any variation in this respect affects the final effect.

---







## METALLIC POWDER COATING

These coatings are produced by mixing color powder and metallic pigments with various types of granule. These coatings are mostly lustrous and depending on customer demand, they have indoor and outdoor application.

The major metallic coatings are the following:

- Silver metallic coatings (M.C.)
- Pearlescent M.C.
- Gold M.C.
- Special Color M.C.
- Copper M.C.



## CLEAR COAT POWDER COATING

These coatings are transparent and cover the substrate surface. They are either made of epoxy-polyester or polyester and come in different colors to suit the decorative or protective applications.

This type of coating lacks weather resistance. To prevent corrosive effects, clear polyester powder coatings could be used.



## WOOD-EFFECT POWDER COATING

---

Another type of powder coating is the wood-effect powder coating. This coating is applied in two stages: First the powder coating is applied and cured on the surface of the metal substrate. In the second stage, the desirable effect is achieved by attaching the pattern (either in paper or in PE film) to the substrate and transferring it to the substrate by using a special machine under specific temperature, pressure and vacuum circumstances.

On account of attractive and varied patterns, these coatings are used extensively in the aluminum industry, Teflon-coated utensils, and kitchen cabinetworks.

---

